



TERALEADER World Best R&D Technology!

# DIGITAL ELECTRIC PRESS

for ALL SOLID-STATE BATTERIES

TPU-001  
TPU-010  
TPU-040

# Digital Electric Press

Press, Measuring distance, Heat treatment and EIS measurement at once

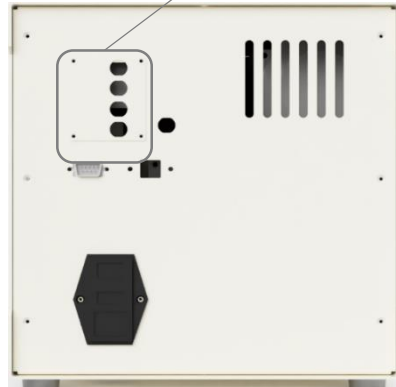
- Press, Measuring distance, Heat treatment and 5-probe measurement simultaneously.
- Bluetooth communication system(\* option)

**Front side** ▪ Internal Temperature controller



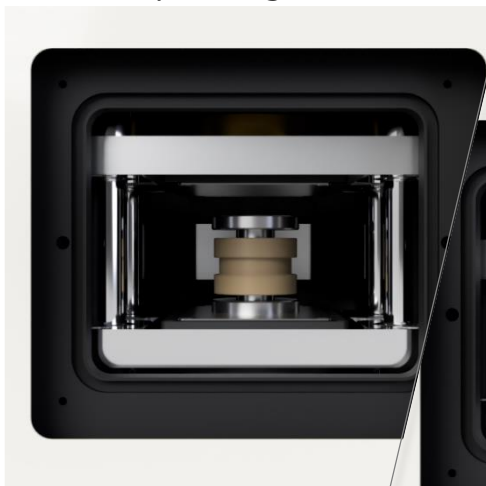
- Upper / lower electrode measuring

**Back side** ▪ Probe measurement (3~5 probe option)

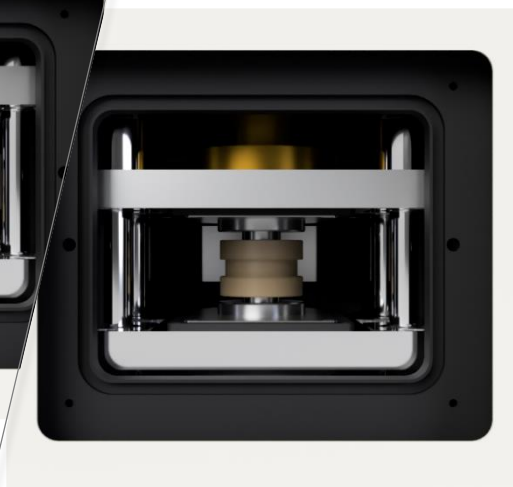


## How to press

▪ Before pressing



▪ After pressing



# Digital Electric Press

Press, Measuring distance, Heat treatment and EIS measurement at once

**Bluetooth  
Communication!**



## “ Press ”

Continuous pressure can be applied to materials up to 10~4,000kgf.

## “ Heat treatment ”

Temperature can be controlled from 10°C (Option) to 80°C

## “ Measurement ”

To measure micro scale displacement, EIS, charge and discharge experiments, at once

# Digital Electric Press

Press, Measuring distance, Heat treatment and EIS measurement at once



## Specification

|                                | Unit                         | TPU-001         | TPU-010         | TPU-040         |
|--------------------------------|------------------------------|-----------------|-----------------|-----------------|
| Max. pressure                  | N                            | 1,000           | 10,000          | 40,000          |
| Min. force resolution          | N                            | 1               | 10              | 10              |
| Sample moving space            | WxDxH,<br>(mm <sup>3</sup> ) | 70 X 50 X 80    | 70 X 50 X 80    | 70 X 50 X 80    |
| SERVO actuator moving distance | mm                           | 30              | 30              | 30              |
| Min. distance resolution       | um                           | 1               | 1               | 1               |
| Max. velocity                  | mm/MIN                       | 20              | 10              | 10              |
| Operating temperature          | °C                           | 10(Option)~80   | 10(Option)~80   | 10(Option)~80   |
| Temperature resolution         | °C                           | 0.1             | 0.1             | 0.1             |
| Dimensions                     | WxDxH,<br>(mm <sup>3</sup> ) | 270 X 350 X 280 | 270 X 350 X 280 | 270 X 350 X 280 |
| Weight                         | kg                           | 24              | 24              | 24              |